



Eltrex General Presentation

2020



Eltrex in Brief

Eltrex in brief – our story

- 1999 – The company is founded in Timisoara, Romania
- 2003 – The first export contract for automation electrical panels
- 2005 – Electrical panel export reaches 20% of our turnover
- 2006 – We move in our new headquarters, which provides over 2000 sqm of production and office space
- 2010 – The first project outside of Romania, at Mercedes – Benz Hungary
- 2013 – The first project outside of Europe, at Rehau South Africa
- 2015 – Our employees have reached most of the European countries
- 2016 – Eltrex extends its references with the first HVAC contract for Mahle Romania
- 2018 – We experience the fastest turnover growth in the past 10 years, of over 40%
- 2019 – Eltrex extends its references with the first contract for Continental Romania, as general contractor
- 2020 – We completed our second project in the medical and pharmaceutical industry



Eltrex in brief – our values

- People - we work and treat each other as a family
- Quality – we guarantee the best quality for our services
- Trust – our partnerships are based on mutual trust and collaboration



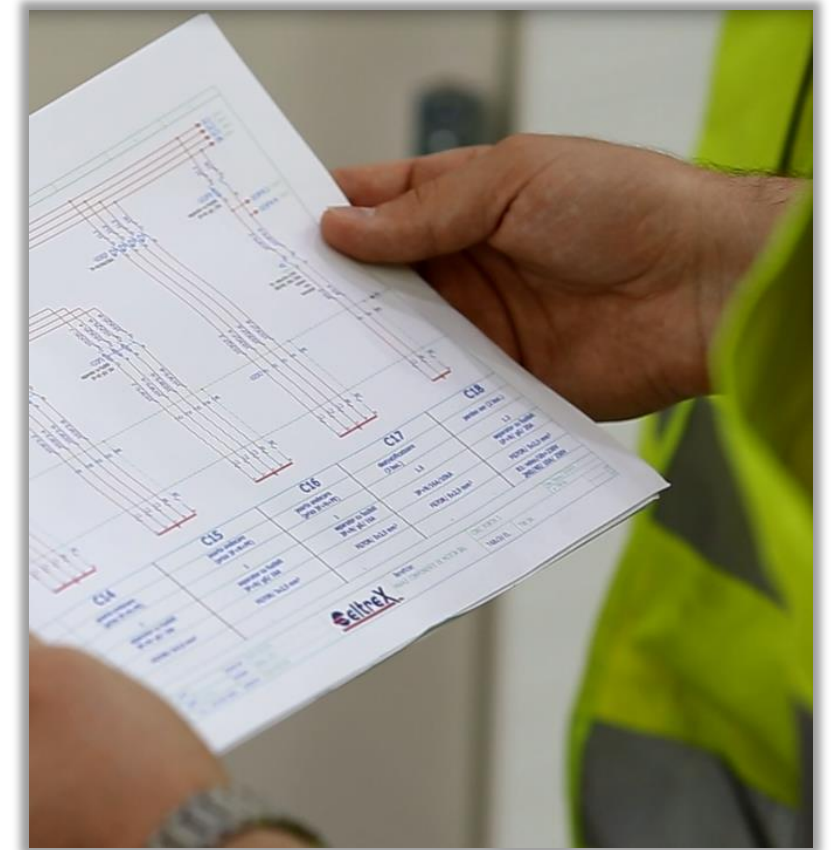


Core Business

Electrical installations for industry

Design, electrical panels production, installation, commissioning, testing and testing reports.

- Power station: MV cells; Transformers 20 / 0,4 kV; LV Main Distribution Boards.
- Electrical energy distribution installations, machinery supply, indoor and outdoor lightning.
- Safety – Earthing system; Lightning protection; Equipotential bonding; Emergency lighting.



Electrical panels

*Design, production, testing, testing reports,
installation, commissioning.*

- Distribution and electrical energy control up to 5.000A
- Reactive power compensation
- Control and protection for electrical motors - MCC



Automation and SCADA

Design, software development, control boards production, installation, commissioning.

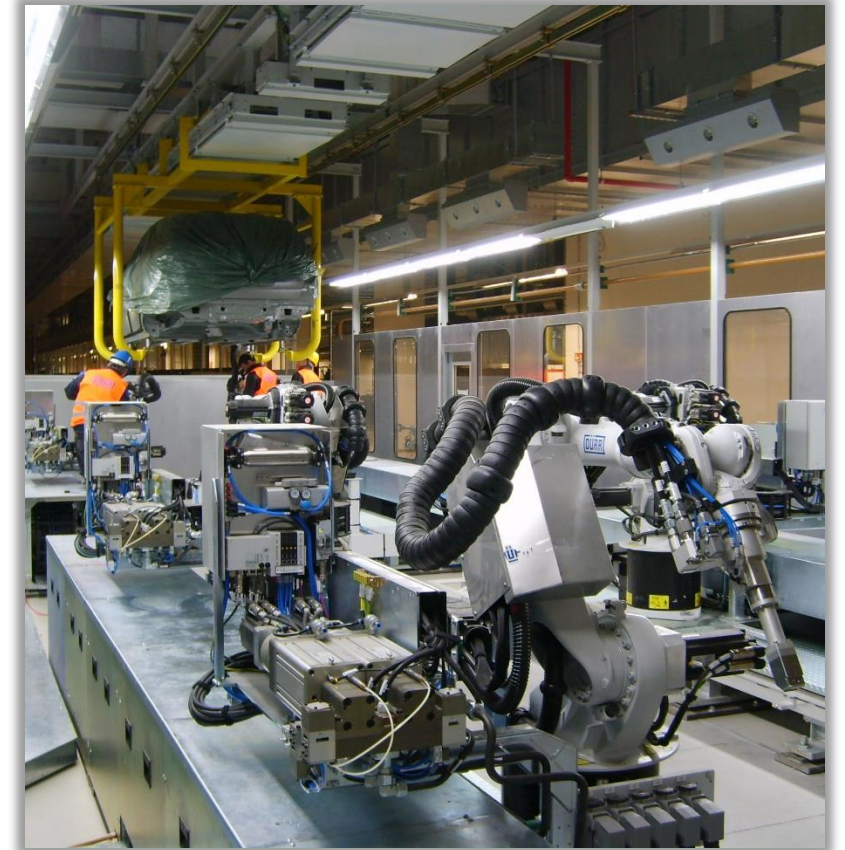
- Building Management System (BMS); HVAC automation; Lighting automation.
- Monitoring and control of energy consumption – electricity, gas, water, steam, etc.
- Industrial process automation; Conveyors automation.
- Drinking Water Treatment Plant; Wastewater Treatment Plant.



Body Car Paint Shop – Process and conveyors automation

Detail design, installation, testing, testing reports, commissioning assistance for:

- Control panels installation.
- Field cabling: cable trays installation, cable pulling, cable connecting, labeling.
- Profinet and Ethernet cabling and connection for data communication in industrial conditions;



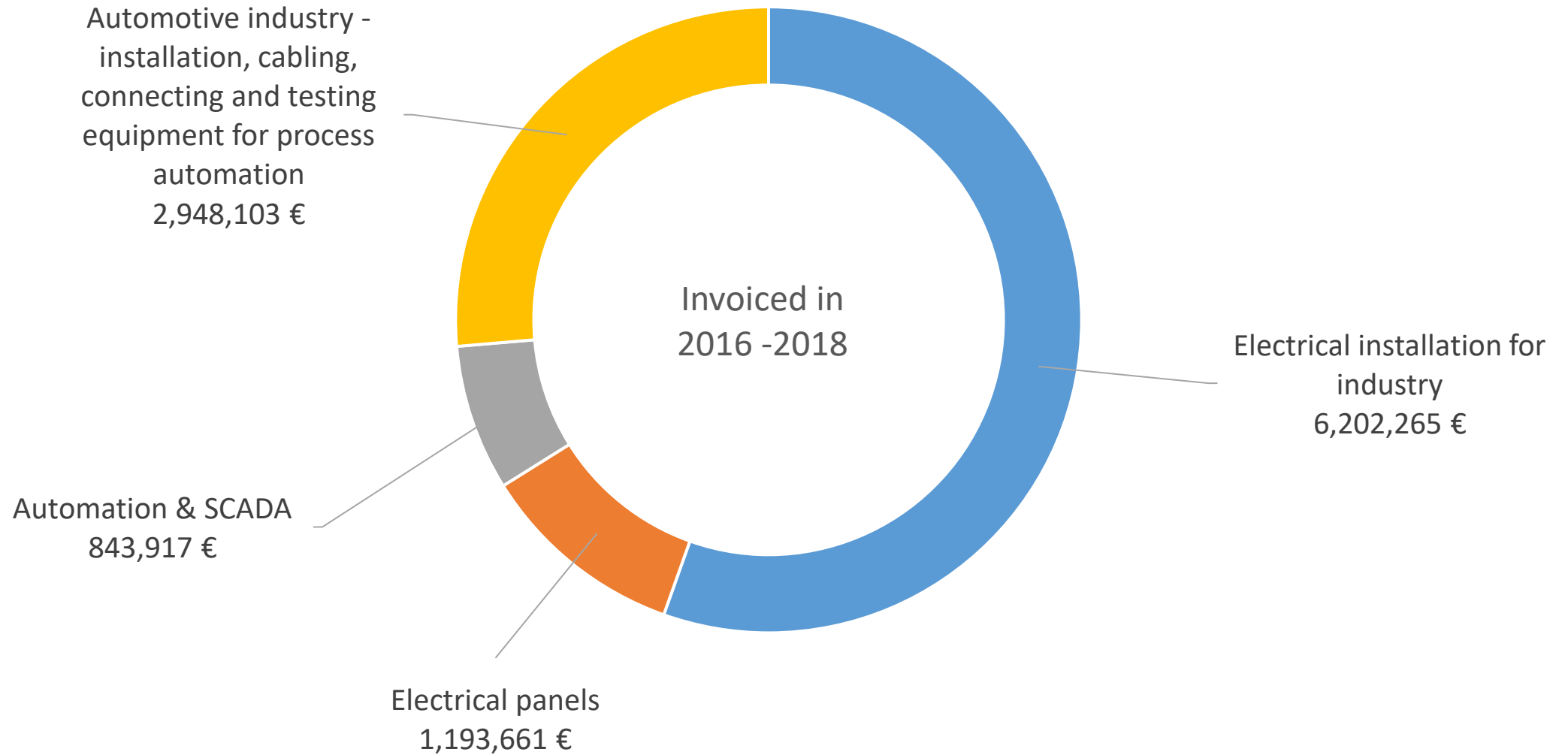
Medical and Pharmaceutical Industry

Design, electrical panels production, installation, commissioning, testing and testing reports.

- Power station: MV cells; Transformers 20 / 0,4 kV; LV Main Distribution Boards.
- UPS Backup and Diesel generator that provides continuous power to vital consumers in the event of a power blackout.
- Electrical lighting installations and sockets for the clean rooms.
- Low currents installation and smoke exhaust system.



Core business - overview



EISENMANN

FM > LOGISTIC



SIPA



MAHLE

B | BRAUN
SHARING EXPERTISE



DÜRR

TRW
Automotive

Main References

Electrical installations for industry

- **Continental Automotive Products** – Timișoara – over 20000 sqm
 - Power Station: MT cells and LV Main Distribution Boards for 5 x 5.000A;
 - About 40 secondary power distribution panels and over 40 km of cable 70 – 300 mmp;
 - Diesel Generator and UPS backup power supply with Automatic Transfer Switch;
 - Normal lighting, over 2100 pcs and emergency lighting.
- **TRW** – Timișoara – new Main Distribution Panel and new MT line
 - MT power lines - 20 kV, 2 lines, horizontal drilling, D250mm L=420m
 - New LV Power Station, Main Distribution Boards for 3 x 4.000A;
 - 4000A busbar connections between transformers and the Main Distribution Panel
- **Pirelli Tyres** – Slatina – over 20000 sqm
 - H123, MT / LV Power Station: 6 x 2000 kVA;
 - H122, MT / LV Power Station: 3 x 2000 kVA;
 - H410, MT / LV Power Station: 2 x 2000 kVA, LV MDB for 2 x 3200A
 - SCADA for Energy Monitoring and Control, for H123, H122 and H410
- **Zoppas Industries Romania s.r.l.** - Sînnicolaul Mare – approx. 48000 sqm
 - Power electrical installations and lighting for industrial buildings Pi = 12.000 kW;
 - Main Distribution Panels Type MODAN 4000A;
 - Busbar trunking (between transformers and MDP) 4000A;
 - Bus ducts (3P+N+PE /100 – 800 A) for powering machinery – approx 1200 m
- **Contitech Romania s.r.l.** (Continental) – Timișoara – approx. 15000 sm
 - MT power line (20 kV) and transformer station 20 / 0,4 kV, 2 x 1600 kVA;
 - Power electrical installations and lighting for industrial buildings Pi = 5000 kW;
 - Main Distribution Panels XEnergy, 2500A;
- **IRROM s.r.l.** – Iclod (Cluj) - approx. 20000 sqm
 - MT power line (20 kV) and two transformer stations 20 / 0,4 kV, 2 x (2 x 800 kVA)
 - Main distribution boards XEnergy type, 2 x (2 x 1250A);
 - Diesel Generator and UPS for backup power supply with Automatic Transfer Switch



Electrical panels

- **SIPA S.p.A.** - Italy (export)
 - Execution of complex automation panels for mineral water bottling lines. In total over 1000 units over a period of 4 years
- **Gesa GmbH.** - Germany (export)
 - Details design, execution and testing for drinking water treatment plants automation in the following German cities:
 - Gießen
 - Göttingen
 - Mainz
- **Kaufland**
 - Design, execution, installation and commissioning for a Main Distribution Panel with 3 sources: 1000 kVA transformer + Diesel generator 300 kVA with Automatic Transfer Switch
 - Execution of electric switchboards for BMS for 10 hypermarkets in Romania

- **Comtim (Smithfield)**
 - Execution and installation of Main Distribution Panel with 3 inputs (2 x 1000 kVA transformer + 800 kVA generator) with Automatic Transfer Switch.
- **Detergenți s.a.** (Procter & Gamble – Timișoara)
 - Execution of control electrical panel for additive dosing lines.
 - Execution of general power distribution boards type Xenergy, 2x 2500A.
- **Crișul Supermarket s.a** - Oradea
 - Design, execution, installation and commissioning for a Main Distribution Panel with 3 sources: 2 x 1000 kVA transformer + Diesel generator 400 kVA with Automatic Transfer Switch
 - Reactive power compensation 400 KVAR.

- **Kika** – Bucharest (Subcontractor AME RO)
 - Design, execution, installation and commissioning for a Main Distribution Panel with 3 sources: 2 x 1000 kVA transformer + Diesel generator 500 kVA with Automatic Transfer Switch
 - Reactive power compensation 2 x 250 KVAR.



Automation and SCADA

- **Continental A.P. BMS – Automation and SCADA for: HVAC, lighting, steam, energy metering.**
 - Detail design, cabling, connection, testing, testing reports, software development, commissioning.
 - Manufacturing and installing of control panels - 34 pcs plus 9 operating panels.
 - The system is based on 28 pcs Siemens PLCs, S7-300, S7-400 and Simatic WinCC (36000 tags)
- **Apa Canal Sibiu - Drinking Water Treatment Plant Automation and SCADA**
 - Design, cabling, connection, testing, testing reports, software development, commissioning.
 - Automation is based on Siemens PCS7, 910 digital inputs, 256 analog inputs, 512 digital outputs and 12 analog outputs.
 - The system includes 47 electrical panels produced in our workshop.
- **Apa Canal Sibiu - Waste Water Treatment Plant, Sewer Network and Drinking Water Network - SCADA**
 - Design, manufacturing of electrical panels, software development, commissioning.
 - Automation is based on Siemens S7-200 PLC installed in each location and connected via GPRS modems. SCADA system is based on Siemens WinCC.
 - The system includes: data acquisition from the water treatment plant and wastewater treatment plant plus other 36 stations (pumping stations, measuring stations etc.).
 - Each pumping station or measuring station runs a software independently of the data transmission. However the operator can take command if the situation requires it.
- **INA Schaeffler BMS – Automation and SCADA for HVAC**
 - Design, execution and commissioning of complex automation systems for HVAC for three new production halls and offices.
 - The project consisted in the design and execution of control panels, field installations (cables, sensors), software development and implementation, adjustments, final test, “as built” documentation.
 - Automation is based on TX PLC modules provided by Siemens Building Technology, with 600 digital inputs, 280 digital outputs, 130 analog inputs and 12 analog outputs.



SCHAEFFLER GROUP

Body Car Paint Shop – Process and conveyors automation

- **Mercedes Benz** Hungary. (Subcontractor Dürr Systems GmbH)
 - Detail design, cabling, connection, testing, testing reports, commissioning assistance for:
 - Control panels installation – 51 pcs;
 - Field cabling: more than 83 km Ölflex cables and more than 1500 field devices connected;
 - Profinet and Ethernet cabling and connection for data communication in industrial conditions;
 - Connecting cables in panels, testing, testing reports, labeling, assistance in commissioning.
- **SMART** Hambach - France (Subcontractor Dürr Systems GmbH)
 - Detail design, cabling, connection, testing, testing reports, commissioning assistance for:
 - Control panels installation – 34 pcs;
 - Field cabling: more than 44 km Ölflex cables and more than 1100 field devices connected;
 - Profinet and Ethernet cabling and connection for data communication in industrial conditions;
 - Connecting cables in panels, testing, testing reports, labeling, assistance in commissioning.
- **Rehau** Port Elizabeth – South Africa and Gyor – Hungary (Subcontractor Dürr Systems GmbH)
 - Detail design, cabling, connection, testing, testing reports, commissioning assistance for:
 - Control panels installation – 40 pcs;
 - Field cabling: more than 41 km Ölflex cables and more than 1800 field devices connected;
 - Profinet and Ethernet cabling and connection for data communication in industrial conditions;
 - Connecting cables in panels, testing, testing reports, labeling, assistance in commissioning.
- **Volkswagen** Wolfsburg – Germany (Subcontractor Dürr Systems GmbH)
 - Detail design, cabling, connection, testing, testing reports, commissioning assistance for:
 - Control panels installation – 38 pcs;
 - Field cabling: more than 62 km Ölflex cables and more than 2000 field devices connected;
 - Profinet and Ethernet cabling and connection for data communication in industrial conditions;
 - Connecting cables in panels, testing, testing reports, labeling, assistance in commissioning.
- **FIAT** Kragujevac - Serbia (Subcontractor Eisenmann GmbH)
 - Detail design, cabling, connection, testing, testing reports, commissioning assistance for:
 - Control panels installation – 71 pcs;
 - Field cabling: more than 75 km Ölflex cables and more than 2400 field devices connected;
 - Profinet and Ethernet cabling and connection for data communication in industrial conditions;
 - Connecting cables in panels, testing, testing reports, labeling, assistance in commissioning.



Medical and Pharmaceutical Industry

- **BBRAUN PHARMACEUTICALS** – Timișoara – over 30.000 sqm

The building complex consists of: storage areas, laboratories, offices and technical areas.

Within the project, we performed the following works:

- Power Station: MT cells, Transformers (1600 kVA, 1000 kVA, 2500 kVA) and LV Main Distribution Boards.
- Secondary power distribution panels – 48 pcs.
- Normal and safety lighting installations - over 2000 lamps.
- Ups Backup and Diesel generator (1100 kVA) that provides continuous power to vital consumers in the event of a power blackout.
- Electrical lighting installations and sockets for the clean rooms.
- The lighting system and motion sensors are integrated in the BMS system through DALI protocol. Thus, there is no need to use the light switches and the intensity of the light can be controller from the BMS server.
- Labeling, testing, testing reports, commissioning.
- AS Built documentation and Construction Book.

- **FM LOGISTIC** – Dragomirești Vale, Ilfov – over 10.000 sqm

This project consists of: one medical storage area (10000 sqm), office spaces and technical areas.

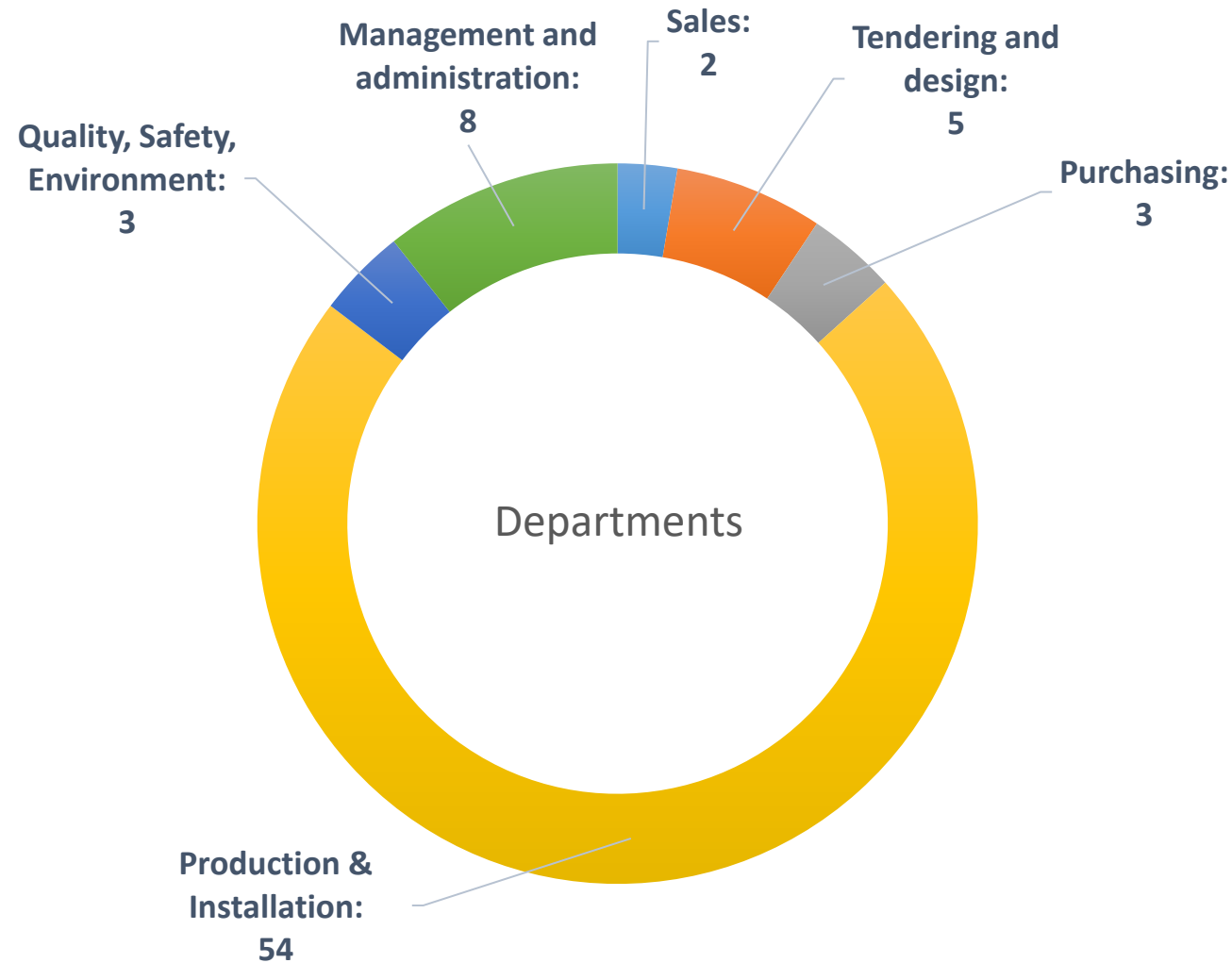
We performed the following works:

- Main distribution board (1600 kVA), and secondary power distribution panels.
- Diesel Generators - 300 kVa.
- Fire alarm system based on smoke aspirating sensors on the storage area.
- Control access system and data voice system.
- Electrical installations for the cooling systems in storage area.
- Smoke exhaust system.
- Labeling, testing, testing reports, commissioning.
- AS Built documentation and Construction Book.

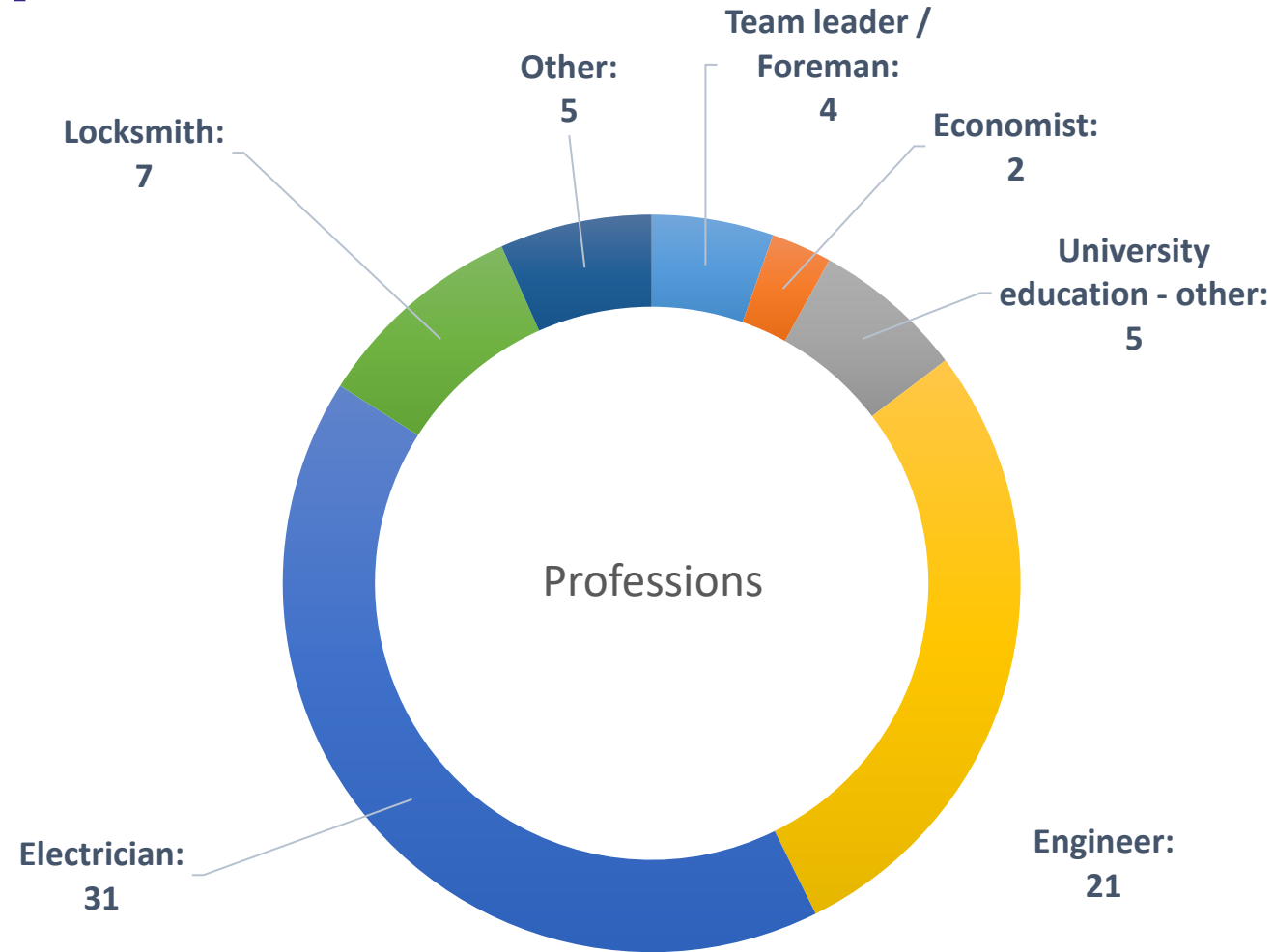


Eltrex Team

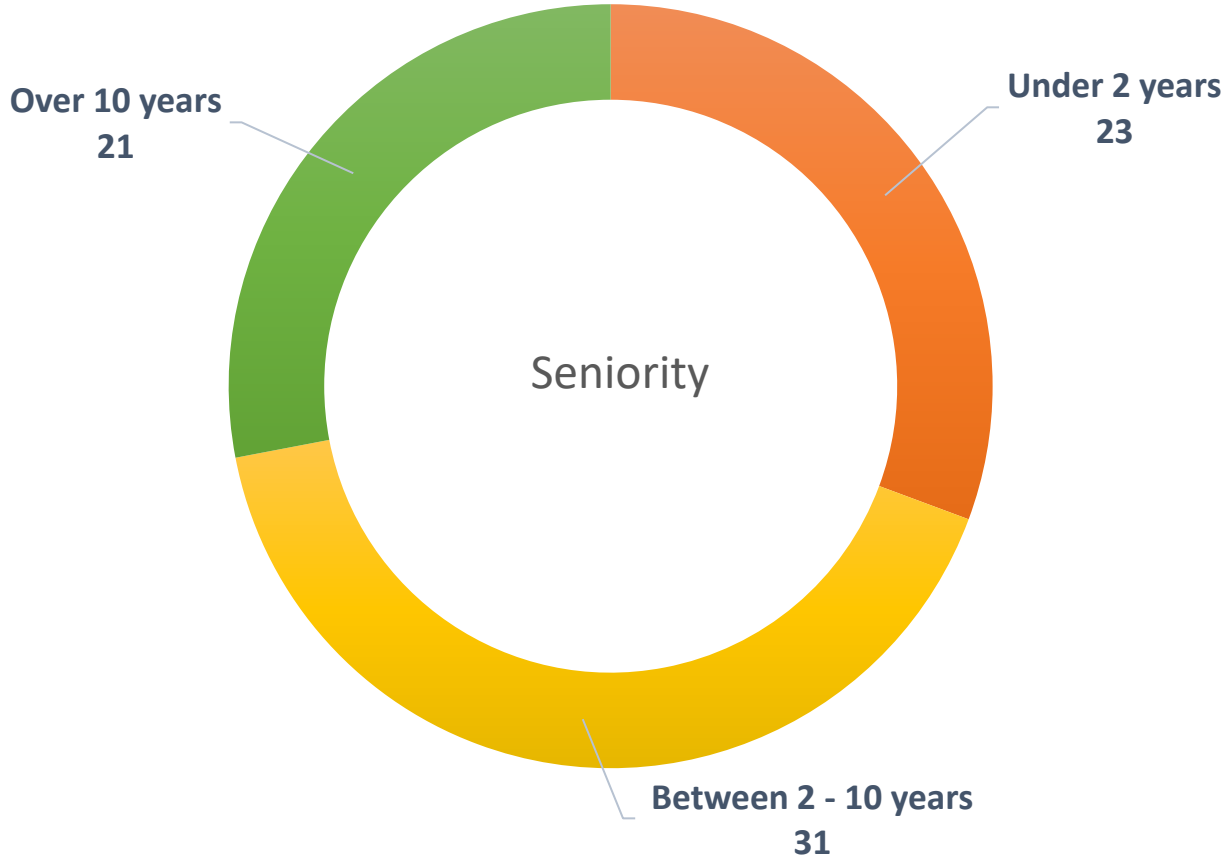
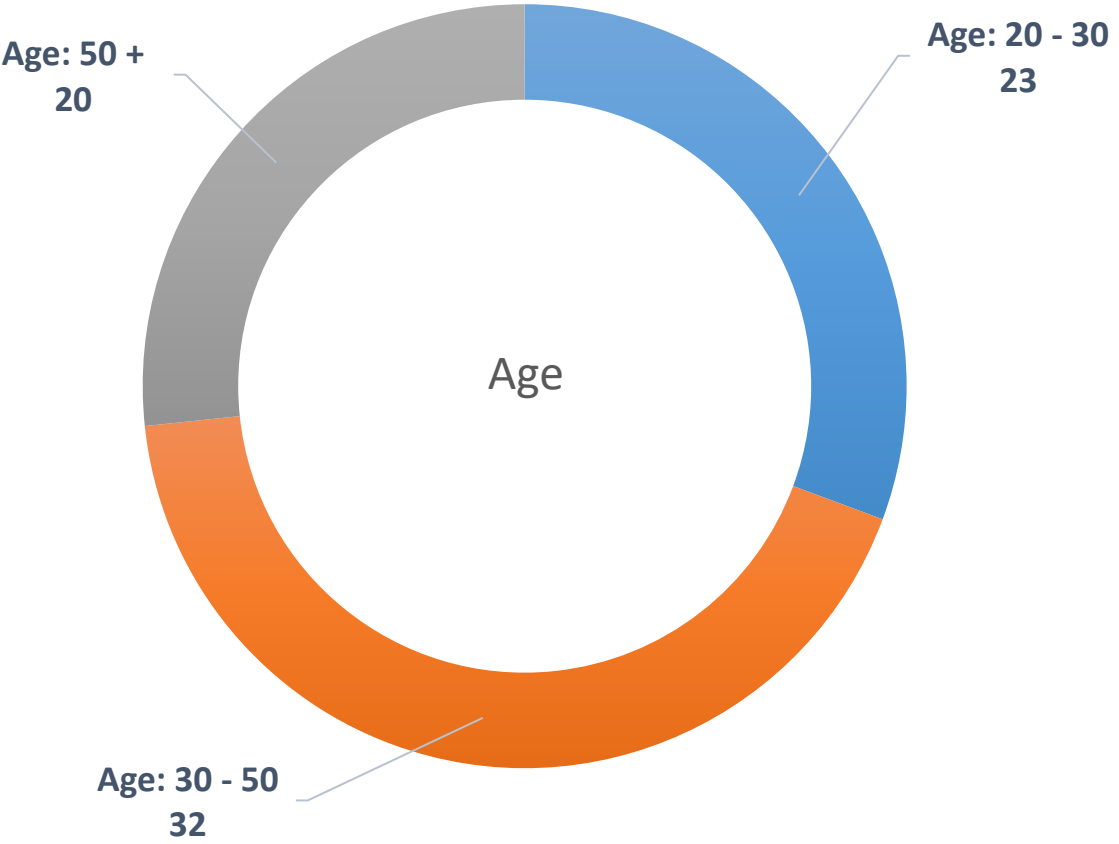
Our team - departments



Our team - professions



Our team - age



Our team – Eltrex family





ROMÂNIA
MINISTERUL ADMINISTRAȚIEI ȘI INTERNELOR
INSPECTORATUL GENERAL AL POLIȚIEI ROMÂNE
DIRECȚIA POLIȚIEI DE ORDINE PUBLICĂ

LICENȚĂ

de funcționare nr. 0318/T

În conformitate cu art. 34 din Legea nr.333/2003 privind paza obiectivelor, bunurilor, valorilor și protecția persoanelor, constatăm că sunt îndeplinite condițiile necesare licențierii și aprobării ca S.C. ELTREX S.R.L.

cu sediul în TIMIȘOARA înmatriculată la Oficiul Registrului Comerțului cu codul unic 11738772 atribut fiscal R și nr. de ordine J 35 / 396 / 05.05.1999 să efectueze activități de:

- proiectare sisteme de alarmare împotriva efracției;
- instalare sisteme de alarmare împotriva efracției;
- întreținere sisteme de alarmare împotriva efracției;



Director

Data _____

Nr.dosar 378.397/

REÎNNOIRE
LICENȚĂ
Nr _____
Data _____

Director
L.S.

REÎNNOIRE
LICENȚĂ
Nr _____
Data _____

Director
L.S.

REÎNNOIRE
LICENȚĂ
Nr _____
Data _____

Director
L.S.

Authorizations

Authorizations

- **ANRE – C1A, C2A and B** for design and execution of works in low and medium voltage.
- **ANRE – A1** for electrical testing and measurements in low voltage electrical installations.
- **ISC** – authorized laboratory for grade II - measurements and tests in electrical installations.
- **ISU** for design, installation and maintenance of equipment for fire detection and warning.
- **IGP** for design, installation and maintenance of electronic security systems.

Thank you!